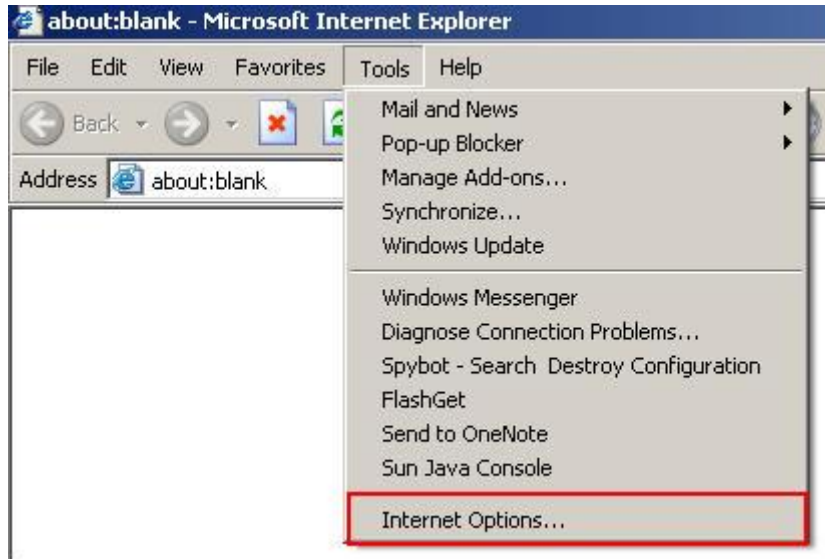


Steps to Add an HTTP Link as a Trusted Site

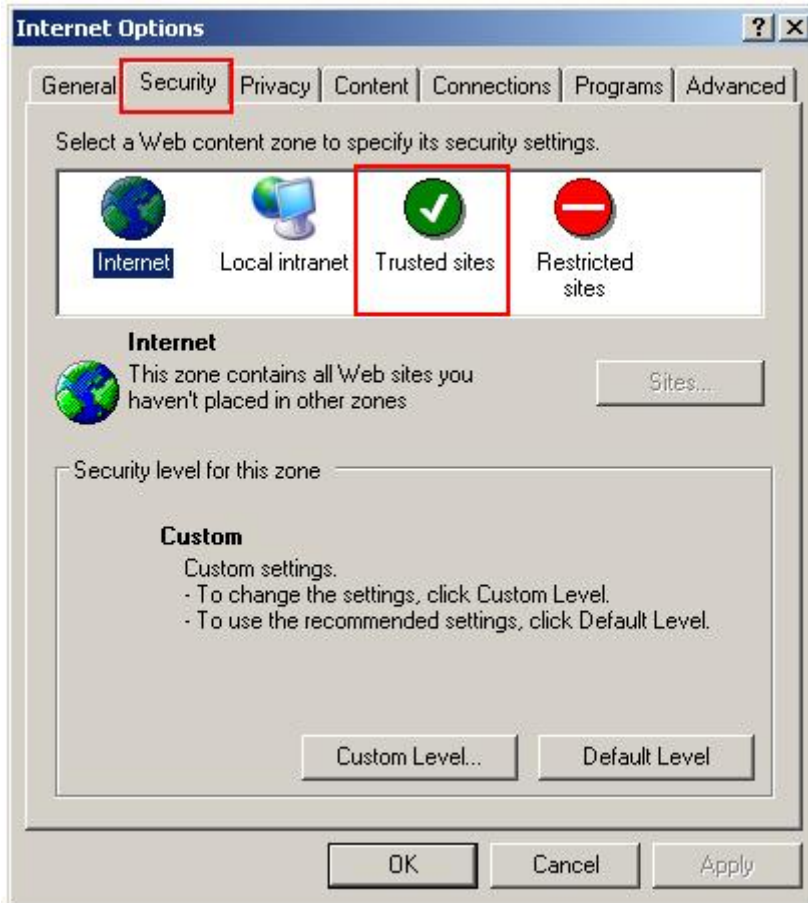
Method 1:

Following these steps would ensure that you could view the course in full screen mode without any trouble.

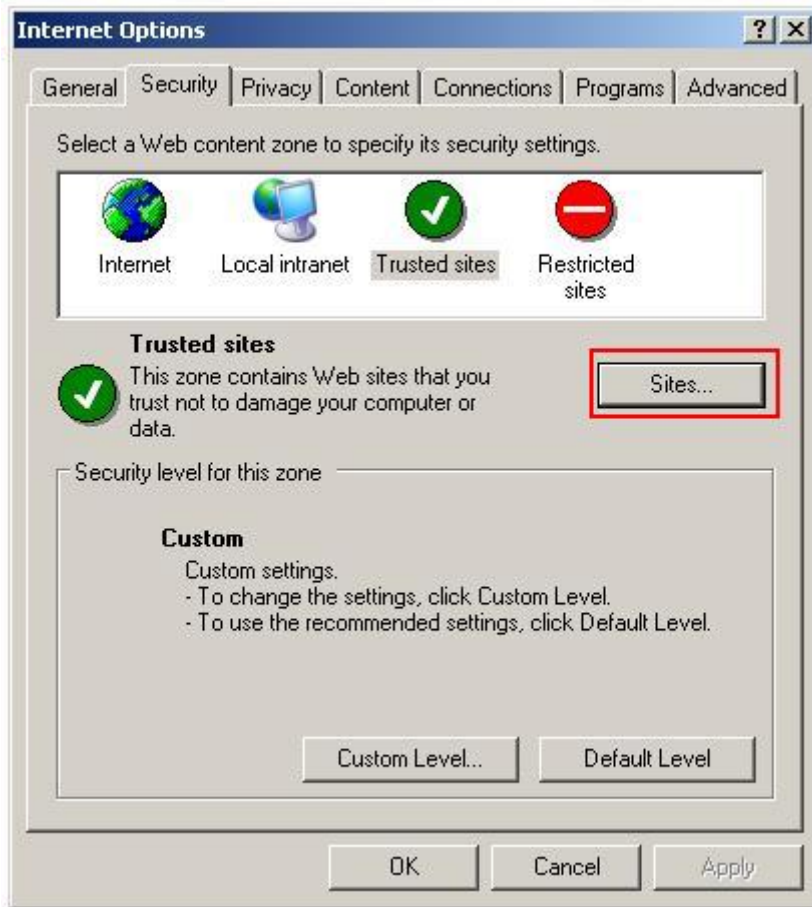
Step 1: Go to Tools menu, and select Internet Options.



Step 2: In the Internet Options dialogue box, click Trusted Sites under the Security tab.



Step 3: Click the Sites button.



Step 4: In the Trusted Sites dialogue box that opens, type, or copy and paste the site URL in the Add this Web Site to the zone field. Then, click Add.

Step 5: Check the website URL in the Web sites box and click OK.



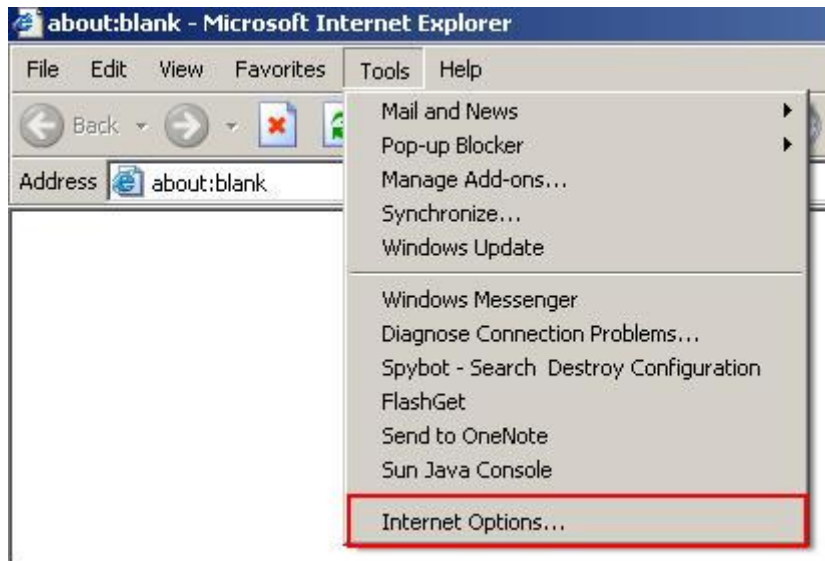
Step 6: Close the browser window and open the course link again.

Step 7: If you are still not able to view the course in full screen mode, please follow Method 2.

Method 2:

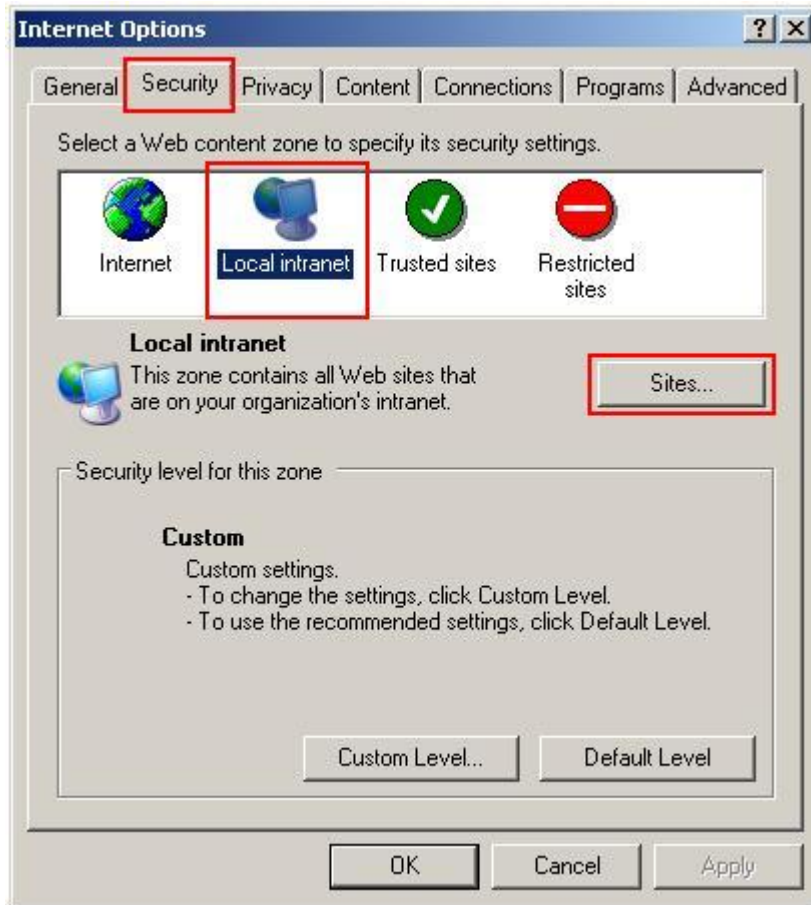
You may not be able to view the course in full screen mode if you run it from a local content server or on IE7. In such situations, please follow Method 2.

Step 1: Go to Tools menu, and select Internet Options.

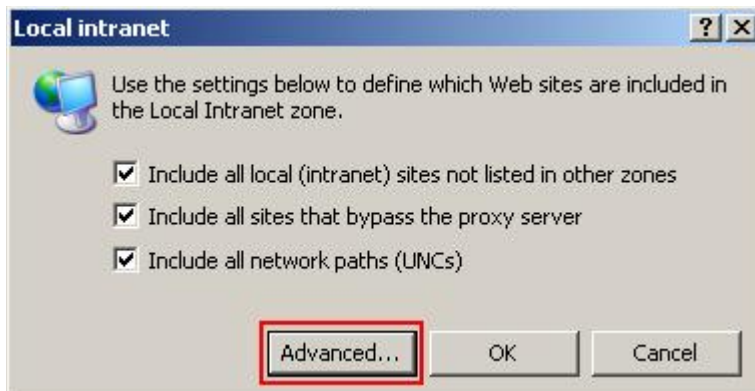


Step 2: In the Internet Options dialogue box, click Local intranet under the Security tab.

Step 3: Click the Sites button.

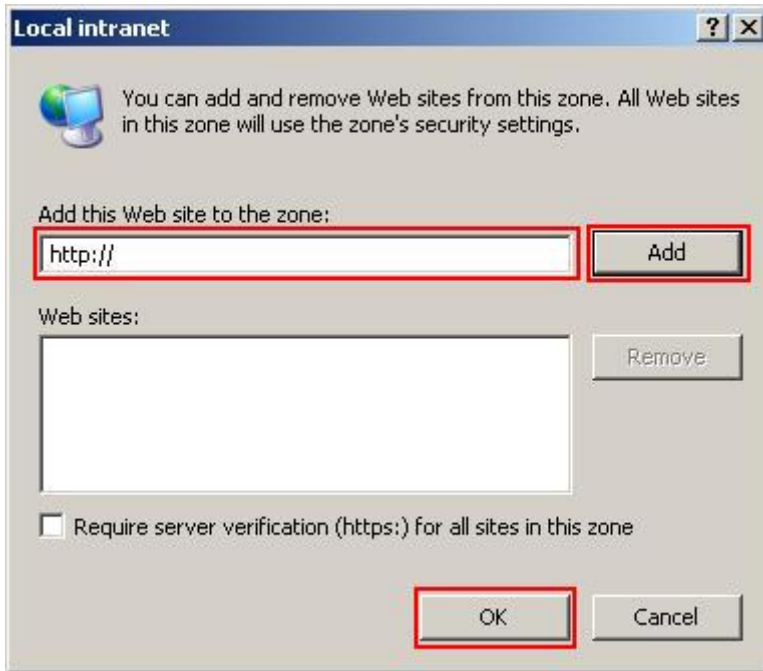


Step 4: Click the Advanced... button.



Step 5: In the Local intranet dialogue box that opens, type, or copy and paste the site URL in the Add this Web Site to the zone field. Then, click Add.

Step 6: Check the website URL in the Web sites box and click OK.



Step 7: Please close the browser window and open the course link again.